



# Increase equipment short-circuit current ratings up to 200 kA



With up to 200 kA SCCR, Bussmann series power distribution blocks help raise equipment SCCR.

RoHS

### Product description:

Eaton's Bussmann® series Power Distribution Blocks (PDBs) with high Short-Circuit Current Rating (SCCR) help achieve compliance with NEC® and OSHA requirements by resolving common SCCR "weak links" in industrial control panels.

These UL® Listed PDBs are available in 1-, 2- and 3-pole panel-mount versions with popular lineside and loadside port configurations.

To increase application flexibility, these blocks feature dual-wire rated ports that accept copper or aluminum conductors while retaining a UL Listed status.

Optional covers are available to enhance electrical safety.

### Features and benefits:

#### High SCCR – up to 200kA

- PDBs are often a control panel's lowest-rated component, or "weakest link," and may limit the equipment SCCR to only 10 kA. The Bussmann series PDB eliminates this weak link.

#### UL Listed

- These higher-SCCR rated PDBs are listed to UL 1953 and can be used in UL 508A panels for both feeder and branch circuit applications.


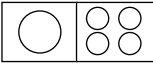

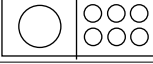

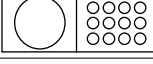

#### Meets 2014 NEC code requirement

- Complies with NEC 376.56(B) listing requirement when used in wireways.

#### Expand installation flexibility

- Dual-wire rated ports and the ability to use UL Listed ferrules greatly expand application flexibility.

Listed to UL 1953, Bussmann series PDBs have SCCRs up to 200 kA, and can replace a lower-rated PDB to help achieve higher control panel SCCRs. Dual-wire rated ports and the use of UL Listed ferrules greatly expand application flexibility. See data sheet no. 10537 for specific aluminum and copper conductor, ferrule and dual wire ratings.

Line/load ports	Poles	Amps	Max SCCR*	Wire range		Catalog no.
				Lineside	Loadside	
	1, 3	175	200	2/0-#14	2/0-#14	PDB204-__
	1, 3	175	200	2/0-#14	#4-#14	PDB220-__
	1, 3	175	200	2/0-#14	1/4-20 x 3/4" stud	PDB280-__
	1, 2, 3	175	200	2/0-#14	#4-#14	PDB321-__
	1, 3	310	200	350kcmil-#6	#4-#14	PDB323-__
	1, 3	310	200	350kcmil-#6	#4-#14	PDB370-__
	1, 3	310	200	350kcmil-#6	1/0-#14	PDB371-__

\* SCCR contingent on upstream fusing. See data sheet 10537 for overcurrent protective device requirements.

Bussmann series PDBs SCCR levels have been tested with Bussmann series fuses and Eaton circuit breakers. SCCR levels up to those shown below are possible with the tested fuses and circuit breaker families. See data sheet 10537 for specific overcurrent protective device and tested SCCR levels.

Catalog no.	Max SCCR (kA)	Bussmann series fuse and Eaton circuit breaker families	Device type
PDB204-1, -3	200	LPJ, LPN-RK, LPS-RK, FRN-R, FRS-R, JJN, JJS, LP-CC, FNQ-R, KTK-R	Fuse
PDB220-1, -3	200	LPJ, LPN-RK, LPS-RK, FRN-R, FRS-R, JJN, JJS, SC, LP-CC, FNQ-R, KTK-R	Fuse
	65	EGC, E_C, EGB, E_B, EGE, E_E, EGS, E_S, EGH, E_H	Circuit breaker
PDB280-1, -3	200	LPJ, LPN-RK, LPS-RK, FRN-R, FRS-R, JJN, JJS, LP-CC, FNQ-R, KTK-R	Fuse
PDB321-1, -2, -3	200	LPJ, LPN-RK, LPS-RK, FRN-R, FRS-R, JJN, JJS, SC, LP-CC, FNQ-R, KTK-R	Fuse
	65	EGC, E_C, EGH, E_E, E_H, EGS, E_S, EGE, EGB, E_B	Circuit breaker
PDB323-1, -3	200	LPJ, LPN-RK, LPS-RK, FRN-R, FRS-R, JJN, JJS, SC, LP-CC, FNQ-R, KTK-R	Fuse
	65	JGH, J_H, JGE, J_E, JGS, JGC, J_C, JGU, J_U, JGX, J_X	Circuit breaker
PDB370-1, -3	200	LPJ, LPN-RK, LPS-RK, FRN-R, FRS-R, JJN, JJS, SC, LP-CC, FNQ-R, KTK-R	Fuse
	65	JGH, J_H, JGE, J_E, JGS, J_S, JGU, J_U, JGX, J_X	Circuit breaker
PDB371-1, -3	200	LPJ, LPN-RK, LPS-RK, FRN-R, FRS-R, JJN, JJS, SC, LP-CC, FNQ-R, KTK-R	Fuse
	65	JGH, J_H, JGE, J_E, JGS, J_S, JGC, J_C, JGU, J_U, JGX, J_X	Circuit breaker

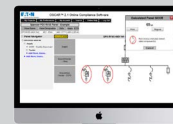
### Tools to help make SCCR compliance easier:



**FC<sup>2</sup> Available Fault Current Calculator**  
Calculates available fault current anytime, anywhere.



**SCCR Protection Suite**  
Quickly finds the Eaton components with the SCCRs you need.



**OSCAR™ Online Compliance Software**  
Calculates and documents assembly SCCR for a control panel.

**Eaton**  
1000 Eaton Boulevard  
Cleveland, OH 44122  
United States  
Eaton.com

Bussmann Division  
114 Old State Road  
Ellisville, MO 63021  
United States  
Eaton.com/bussmannseries

Eaton, Bussmann, Low-Peak and OSCAR are valuable trademarks of Eaton in the US and other countries. You are not permitted to use the Eaton trademarks without prior written consent of Eaton.

For Eaton's Bussmann series product information, call **1-855-287-7626** or visit: **Eaton.com/bussmannseries**